

R

5

EXTREME RESTORATIVE PRO-AGEING SATIN SERUM

2 pc.

30 ml / 1.01 fl.oz

FRAME®



+

D

2

THERMAL-VIBRATION FACE MASSAGING DEVICE

FOR EXTERNAL USE ONLY

Serum characterized by a refined and velvety texture. The formula has been devised to provide skin with an immediate plumping action and an incredibly hydrating action. The product contains Hyaluronic Acid, which is highly nourishing. After application, skin appears relaxed and toned. It is ideal for diminishing the sign of deep wrinkles on the face and around the eyes.

DIRECTIONS: R5 serum has been specifically formulated to be applied using the D2 (Thermal-Vibration Face Massaging) device, which, in addition to facilitating penetration of the deepest layers of the skin, intensifies the serum's effects. To use the R5 serum with the D2 device. The use of the device is very easy.

Siero caratterizzato da una texture raffinata e morbidamente vellutata. La formula è stata studiata per fornire alla pelle un immediato effetto "plumping" e una forte azione idratante. Il prodotto contiene Acido ialuronico cui si associa l'effetto nutriente ed emolliente degli oli vegetali. Dopo l'applicazione, la pelle risulta distesa e tonica. Ottimo per attenuare le rughe più marcate presenti su viso e contorno occhi.

Modalità di utilizzo: il siero R5 è stato studiato appositamente per essere applicato con l'ausilio del dispositivo D2 (Thermal-Vibration Face Massaging Device) che, oltre a facilitarne la penetrazione negli strati più profondi della cute, ne intensifica l'azione. Per utilizzare il siero R5 con il dispositivo D2. L'uso del dispositivo è molto facile.



OUR RAW MATERIALS ARE PURE, CERTIFIED OF BIOTECHNOLOGICAL OR PLANT-BASED ORIGIN AND ARE THE MOST INNOVATIVE AVAILABLE TODAY. ALL FRAME PRODUCTS COMPLY WITH THE MOST STRINGENT EUROPEAN SAFETY REGULATIONS, AND THEY ARE REGISTERED ON THE EUROPEAN COSMETIC PORTAL.

INGREDIENTS (INCI/CTFA):

Ethylhexyl Stearate, Octyldodecanol, Isoamyl Laurate, Isododecane, Argania Spinosa Kernel Oil (Organic Origin), Caprylic/Capric Triglyceride, Cocos Nucifera (Coconut) Oil (Organic Origin), Glyceril Behenate, Simmondsia Chinensis (Jojoba) Seed Oil, Silica Dimethyl Silylate, Helianthus Annuus (Sunflower) Seed Oil (Organic Origin), Hydrogenated Vegetable Oil, Isoamyl Cocoate, Behenyl Alcohol, Nylon-6, Persea Gratissima (Avocado) Oil, Tocopheryl Acetate, Tribehenin PEG-20 Esters, Parfum (Fragrance), Lecithin, PEG-30 Dipolyhydroxystearate, Xylose, Trihydroxystearin, Hexyl Cinnamal, Curcuma Longa (Turmeric) Root Oil, Helianthus Annuus (Sunflower) Seed Extract*, Tocopherol, Alpha-Isomethyl Ionone (Alpha-Isomethylionone), Ascorbyl Palmitate, Citric Acid, Linoleol, Sodium Hyaluronate, Coumarin, Ubiquinone, D-Limonene, Geraniol, Citronellol, Citral, Amorphophallus Konjac Root Powder, Benzyl Alcohol, Benzyl Salicylate, Isoeugenol.

HOW TO OPERATE: Ensure that you have recharged the device for approx. 8 hours before use. To charge the device, use the USB charging base.

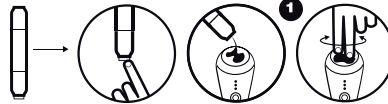


R5 (Extreme Restorative Pro-Ageing Satin Serum)
Made in Italy by: **Frame s.r.l.** Via Copernico 38 (B/436) 20125 Milano - Italy
T +39 02 9285 2120 - info@framecosmetics.com - www.framecosmetics.com

D2 (Thermal Vibration Face Massaging)
Made in PCR for: **Frame s.r.l.** Via Copernico 38 (B/436) 20125 Milano - Italy
T +39 02 9285 2120 - info@framecosmetics.com - www.framecosmetics.com

PHASE 1

Thoroughly cleanse and dry face, neck and décolleté. Put a small amount of R5 serum onto the conductor (fig. 1) in order to facilitate the movement of the device on your face during the skin pre-warming phase. N.B.: All FRAME® serums and creams use an airless dispenser which provides the correct amount of product for a single use. To dispense the R5 serum simply twist the top of the tube: the movement will push the nozzle and button out. A light push of the button will dispense the correct amount of product.

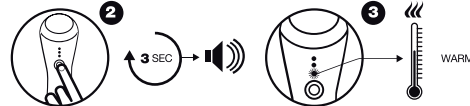


RoHS COMPLIANT



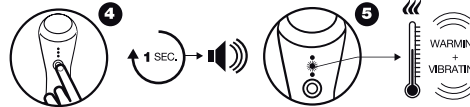
PHASE 2

Press the on button for 3 seconds (fig.2). You will hear a beep and the warming function light will come on (fig.3) This means that the device is on and therefore you can start to gently pre-warm your face, forehead, neck and décolleté for about a minute. Remember to remove glasses when using the device and to never use it on damaged skin. Do not massage the same area for too long.



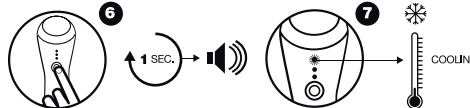
PHASE 3

Now your pores are temporarily open and your skin is ready for treatment to begin. Apply a dose of R5 serum to your face, or more if you intend to extend treatment to your neck and décolleté, and press the on button again for a second (fig.4). The "thermal vibration" function light (fig.5) will come on, the device will start alternating vibration and you will hear another beep. Now you can start to gently massage your face, neck and décolleté for another minute, applying light pressure and concentrating on areas with wrinkles. Keep your eyes closed while massaging around the eye contour area.



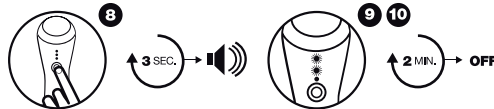
PHASE 4

Press the on button again for a second (fig.6). The cooling function light (fig.7) will come on and you will hear a beep. The device stops alternating thermal vibration and starts to cool down, lowering the temperature to 6°C. You will feel a very pleasant sensation: your skin will naturally react to the cold by closing its pores and all the active ingredients from the serum will be retained deep inside the skin, where they will gradually start to perform their function. Continue massaging your face for another minute.



PHASE 5

Press the on button again (fig.8). The cooling function light (fig.9) and the thermal-vibration function light (fig.10) will come on. The cooling function will continue to work and the thermal vibration function will kick back in. Continue massaging until you hear a beep (2 minutes). The device will turn off automatically. The session is over. Gently tap your face with your fingertips to help absorb any excess serum.



N.B.: Every selected function works for two minutes. If you exceed this time, the device will automatically turn off. If you exceed the two minutes by mistake and the device turns off, simply start from the beginning and repeat the steps until you reach the desired phase.



FRAME® ADVANCED MEDITERRANEAN PRO-AGEING SOLUTIONS
framecosmetics.com
info@framecosmetics.com